

BOARD OF GOVERNORS (BGOV)

BOARD OF DIRECTORS (BDIR)

PRESIDENT
Akinwumi A. ADESINA
PRST X 2000

FIRST VICE PRESIDENT / COO & CHAIR OF SMCC
E. E. Mbi
FVP/COO X 2089

OFFICE OF THE AUDITOR GENERAL
C. Okonkwo
OAGL X 2461

INTEGRITY AND ANTI-CORRUPTION
A. Bossman
IACD X 2094

OFFICE OF THE PRESIDENT
S. Moyo
SAPR X 4020

GENERAL COUNSEL & LEGAL SERVICES
K. Gadio
GECL X 2032

COMMUNICATION & EXTERNAL RELATIONS
J.S. Kibazo
CERD X 2024

STAFF INTEGRITY & ETHICS OFFICE
M. Kisubi
SIEO X 2167

INDEPENDENT DEVELOPMENT EVALUATION
R. Nangia
IDEV X 2041

COMPLIANCE REVIEW & MEDIATION UNIT
S. Touré
CRMU X 2056

SECRETARIAT TO THE SANCTIONS APPEALS BOARD
M. Diawara
SABS X 3583

ADMINISTRATIVE TRIBUNAL
M. Diawara, Ag.
TRIB X 3583

ABIDJAN RETURN DIRECTORATE
A. Niane, Ag.
DIRA X 4010

SECURITY
W. Godbout
SECU X 2395

SOCIAL ENVOY ON GENDER
G. Fraser-Moleketi
SEOG X 2080

GROUP CHIEF RISK OFFICER
T. Turner
GCRO X 2051

CHIEF ECONOMIST
S. Kayizzi-Mugerwa, Ag.
ECON X 2064

OPERATIONS I COUNTRY & REGIONAL PROGRAMS & POLICY
J. Litse, Ag
ORVP X 4047

OPERATIONS II SECTOR OPERATIONS
A. Abou-Sabaa
OSVP X 2004

OPERATIONS III INFRASTRUCTURE, PRIVATE SECTOR & REGIONAL INTEGRATION
S. Asamoah
OIVP X 4002

STRATEGY & OPERATIONAL POLICIES
K. Kapoor
COSP X 2045

DIRECTOR FVP/COO& SMCC SECRETARIAT
E. Faal
COOO X 4011

FINANCE
C. Boamah
FNVP X 2003/2073

CORPORATE SERVICES
N.L. Nwabufu, Ag.
CSVP X 2052

SECRETARY GENERAL
C. Akintomide
SEGL X 2005

DEVELOPMENT RESEARCH
S. Abebe, Ag.
EDRE X 2420

STATISTICS
C. L. Lufumpa
ESTA X 2175

AFRICAN DEV. INSTITUTE
B. Dia. Kamgnia, Ag
EADI X 2109

PROCUREMENT & FIDUCIARY SERVICES
V. Sharma
ORPF X 2027

TRANSITION SUPPORT
S. Tapsoba
ORTS X 2075

NIGERIA COUNTRY OFFICE
O. Doré
ORNG X 6650

WEST AFRICA REGION
A. Bernoussi, Ag
ORWA X 2705

CENTRAL AFRICA REGION
M. Kanga
ORCE X 2251

NORTH AFRICA REGION
J. Kolster
ORNA X 2065

SOUTHERN AFRICA REGIONAL RESOURCE CENTRE
K. Mbekeani, OIC
SARC X 8403

EASTERN AFRICA REGIONAL RESOURCE CENTRE
G. Negatu
EARC X 8232

AGRICULTURE & AGRO INDUSTRY
C. Ojukwu
OSAN X 2042

HUMAN DEVELOPMENT
S. Pitamber, Ag
OSHD X 2310

GOVERNANCE & FINANCIAL MANAGEMENT
J. D. Mukete
OSGE X 2120

WATER AND SANITATION
M. El Azizi
OWAS X 2083

AFRICAN NATURAL RESOURCES CENTER
S. Khama
ANRC X 2068

ENERGY, ENVIRONMENT AND CLIMATE CHANGE
A. Rugamba
ONEC X 2025

TRANSPORT & ICT
A. Oumarou
OITC X 3075

PRIVATE SECTOR
K. M. Diallo
OPSD X 2147

NEPAD, REGIONAL INTEGRATION AND TRADE
C. M. Mupotola
ONRI X 2156

FINANCIAL SECTOR DEVELOPMENT
S. L. Nalletamby
OFSD X 2700

RESULTS & QUALITY ASSURANCE
S. Mizrahi
ORQR X 2060

BUSINESS DEVELOPMENT OFFICE
Vacant
COBD X

DELIVERY & PERFORMANCE MANAGEMENT OFFICE
OIC
COPM X 2190

STAFF APPEALS COMMITTEE
A. K. Dileita
Secretary to APCU
APCU X 3056

OMBUDSMAN
A. Orraca-Ndiaye
OMBU X 2114

PROGRAMMING & BUDGET
R. Olaye, Ag
COPB X 2190

OPERATIONS COMMITTEE SECRETARIAT
A. Dinga-Dzondo
OPSC X 2078

ASIA EXTERNAL REPRESENTATION OFFICE
T. Yokoyama
ASRO X 8720

DECENTRALIZATION
Vacant
PECOD X

SANCTIONS OFFICE
M. L. Bilé-Aka
Secretary to SANO
SANO X 2476

TREASURY
H. N'Sélé
FRY X 2028

FINANCIAL CONTROL
A.O. Odukomaia
FFCO X 2026

STAFF RETIREMENT PLAN
C. Babalola
SRPU X 3005

RESOURCE MOBILIZATION & EXTERNAL FINANCE
D. J.-M. Vencatachellum
FRMB X 2076

FINANCIAL MANAGEMENT
T. De Kock, OIC
FFMA X 2138

GENERAL SERVICES & PROCUREMENT
J.-B. Bilé
CGSP X 2030

HUMAN RESOURCES MANAGEMENT
P.V. Poukouta, Ag
CHRM X 2224

CORPORATE IT SERVICES
P. C. Vougo, Ag.
CIMM X 2199

BOARD AFFAIRS
Vacant
SGBA X

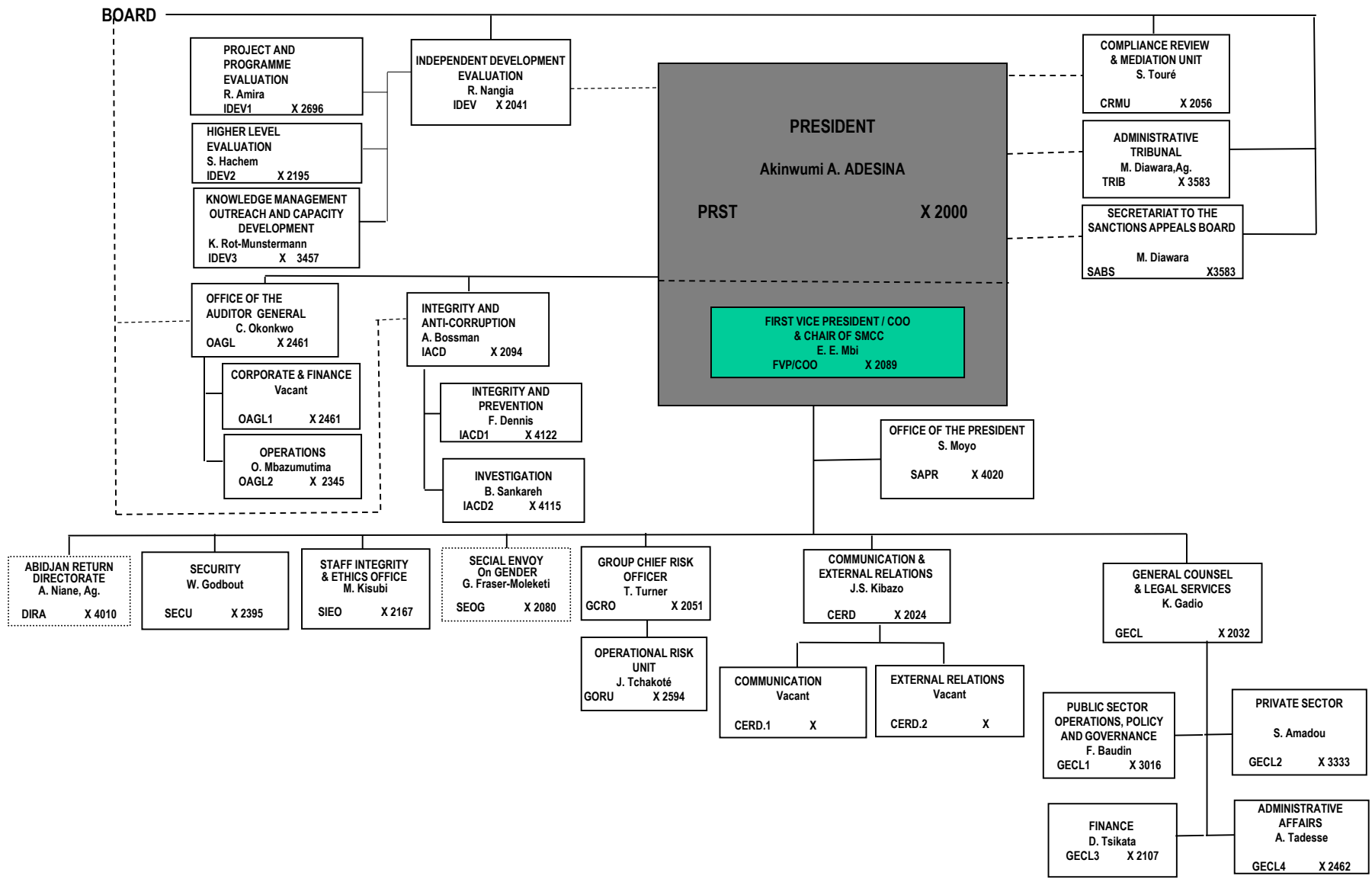
PROTOCOL & CONFERENCE
Vacant
SGPC X

LANGUAGE SERVICES
O. O. L. Pinzi
SGLS X 2071

* On Special Assignment with COPB

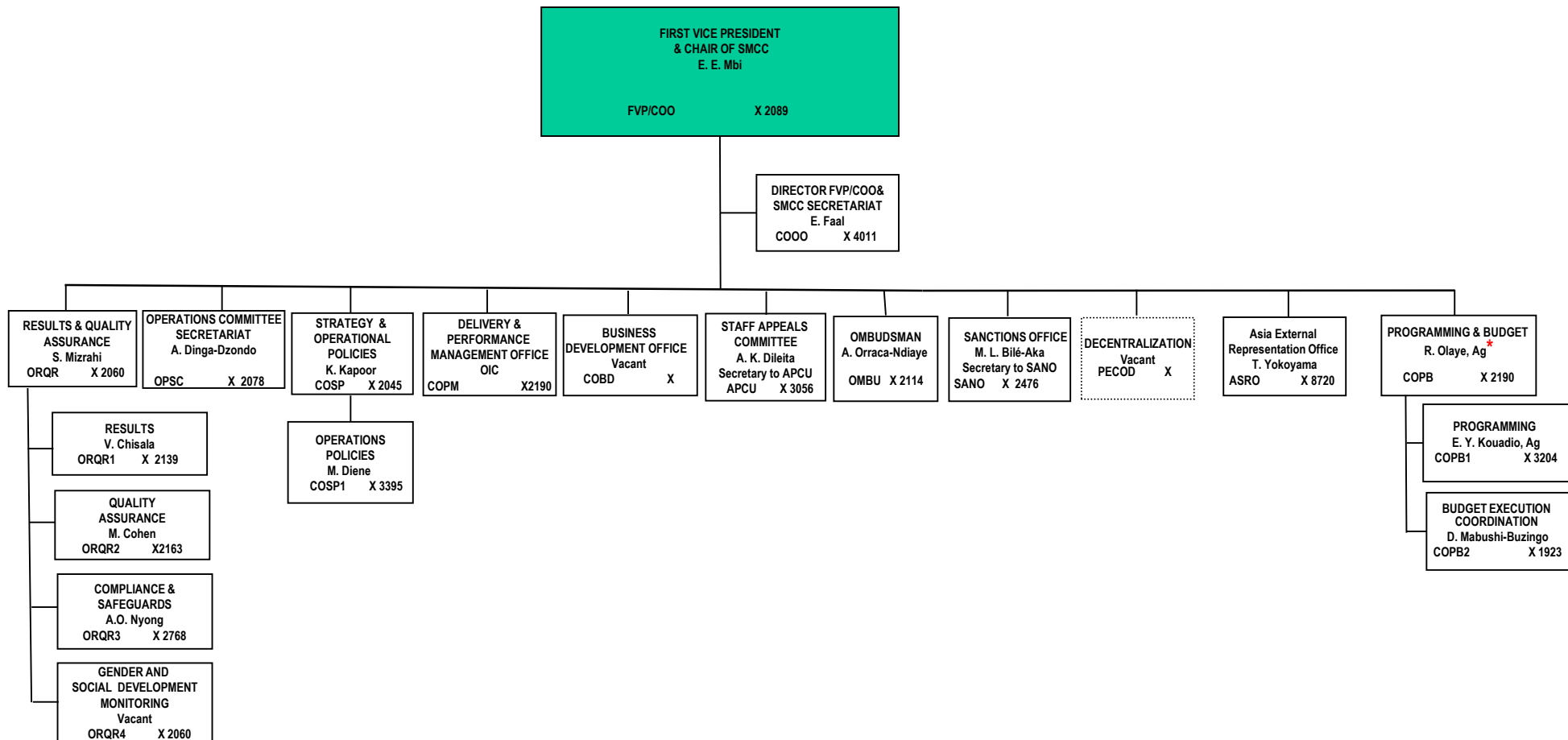


PRESIDENCY



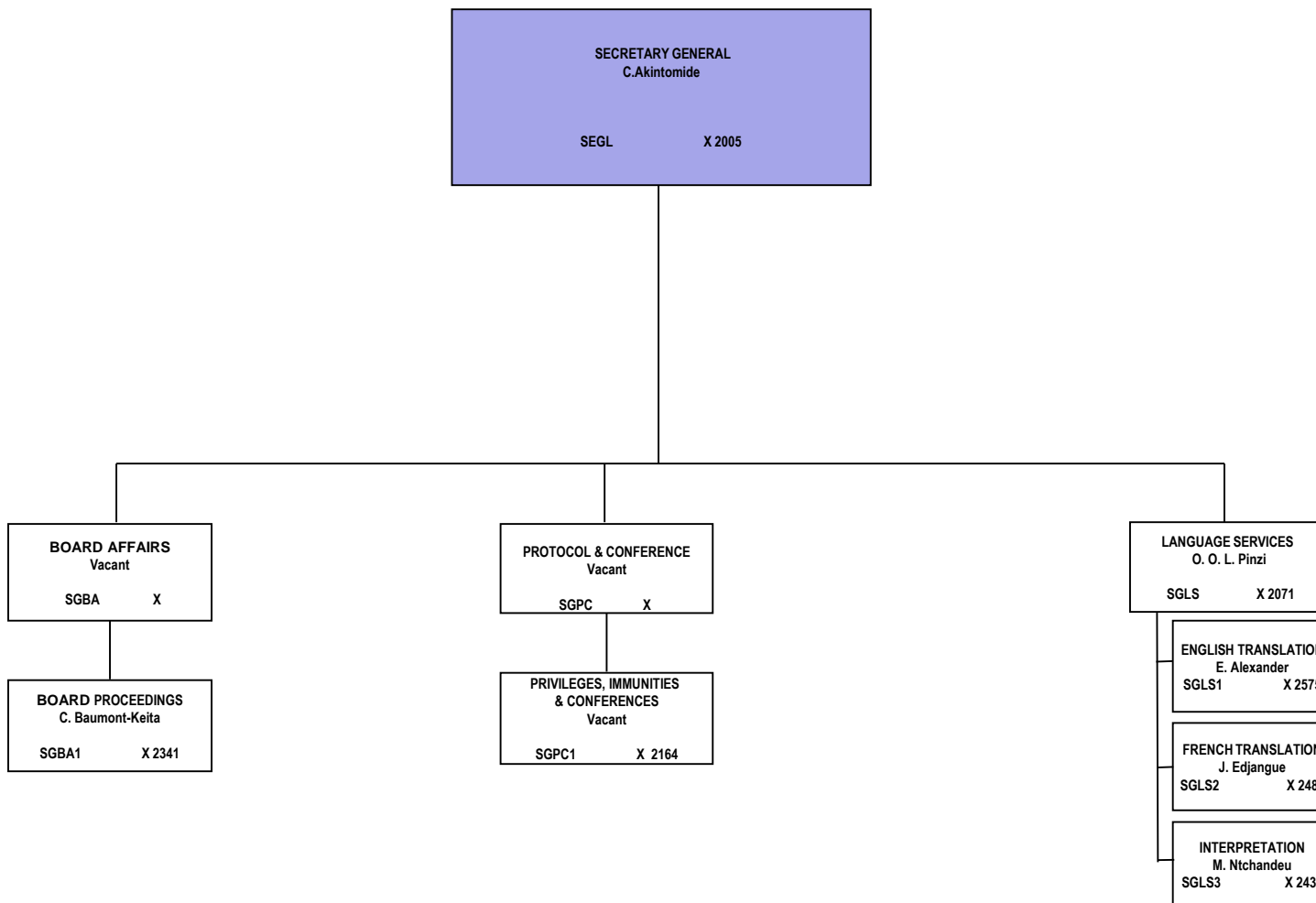


FIRST VICE PRESIDENCY/COO



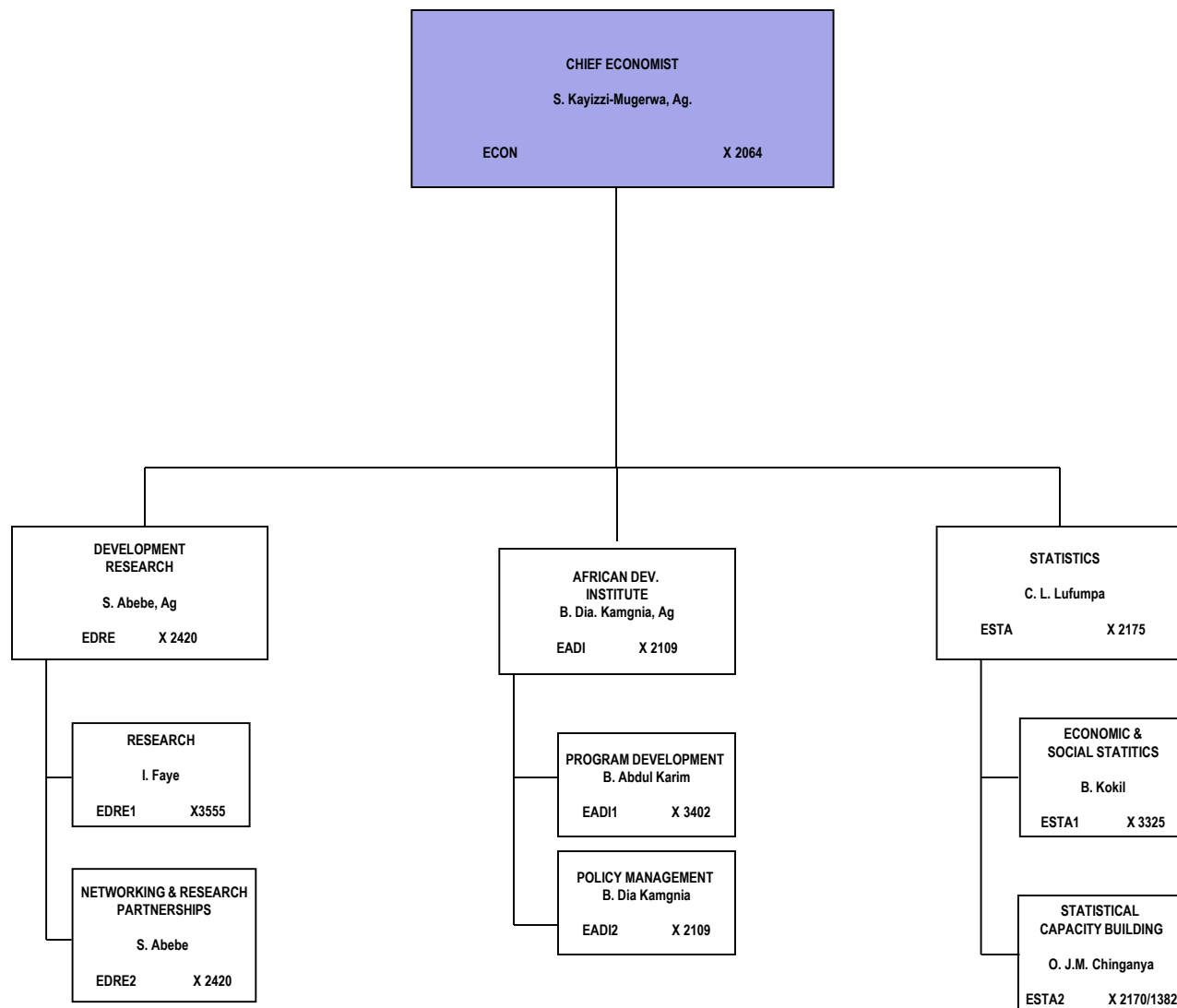


SECRETARY GENERAL



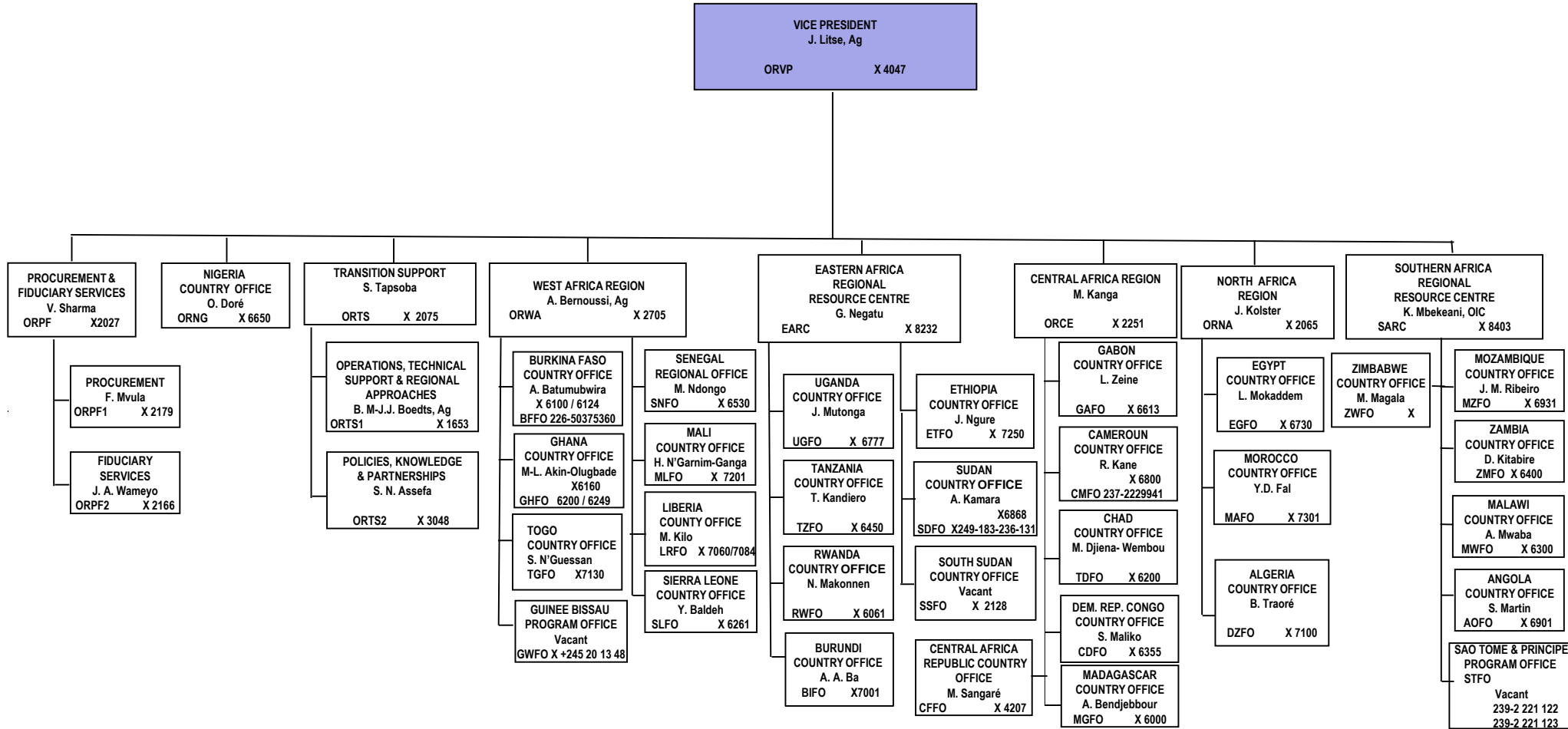


CHIEF ECONOMIST





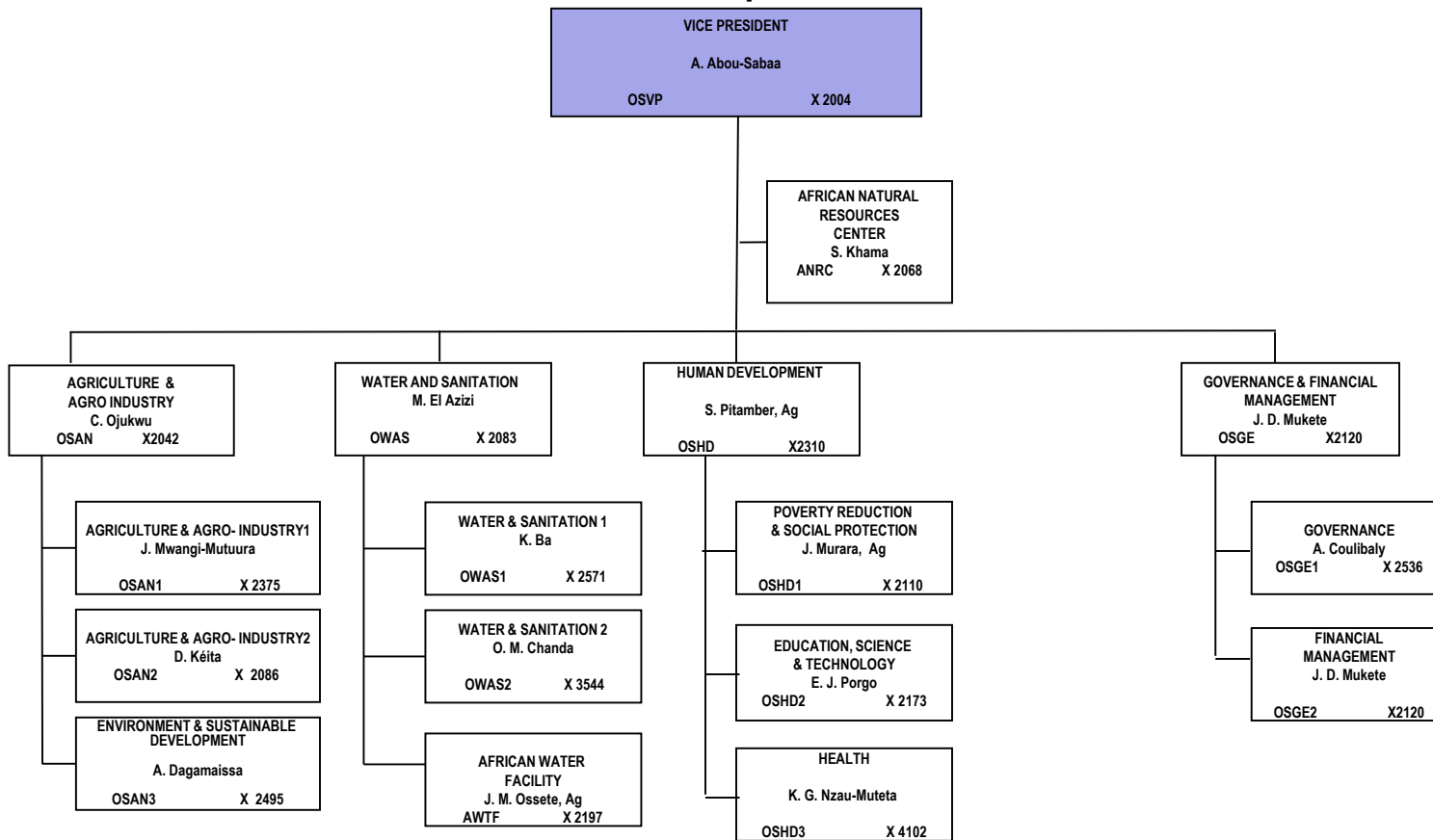
VICE PRESIDENCY OPERATIONS I: Country & Regional Programs & Policy



East Region: Burundi, Kenya, Rwanda, Seychelles, Tanzania, Uganda, Djibouti, Comoros, Eritrea, Ethiopia, Somalia, Sudan
West Region: Benin, Burkina Faso, Cote d'Ivoire, Ghana, Niger, Nigeria, Togo, Cape Verde, Gambia, Guinea, Guinea-Bissau, Liberia, Mali., Senegal, Sierra Leone
Center Region: Cameroon, Central African Republic, Chad, Congo Democratic Republic, Republic of Congo, Madagascar, Equatorial Guinea, Gabon
North Region: Egypt, Libya, Tunisia, Algeria, Mauritania, Morocco
South Region: Botswana, Lesotho, Namibia, South Africa, Swaziland, Zimbabwe, Angola, Malawi, Mauritius, Mozambique, Zambia, Sao-Tome & Principe



VICE PRESIDENCY OPERATIONS II: Sector Operations



OSAN1: North, East and South Regions

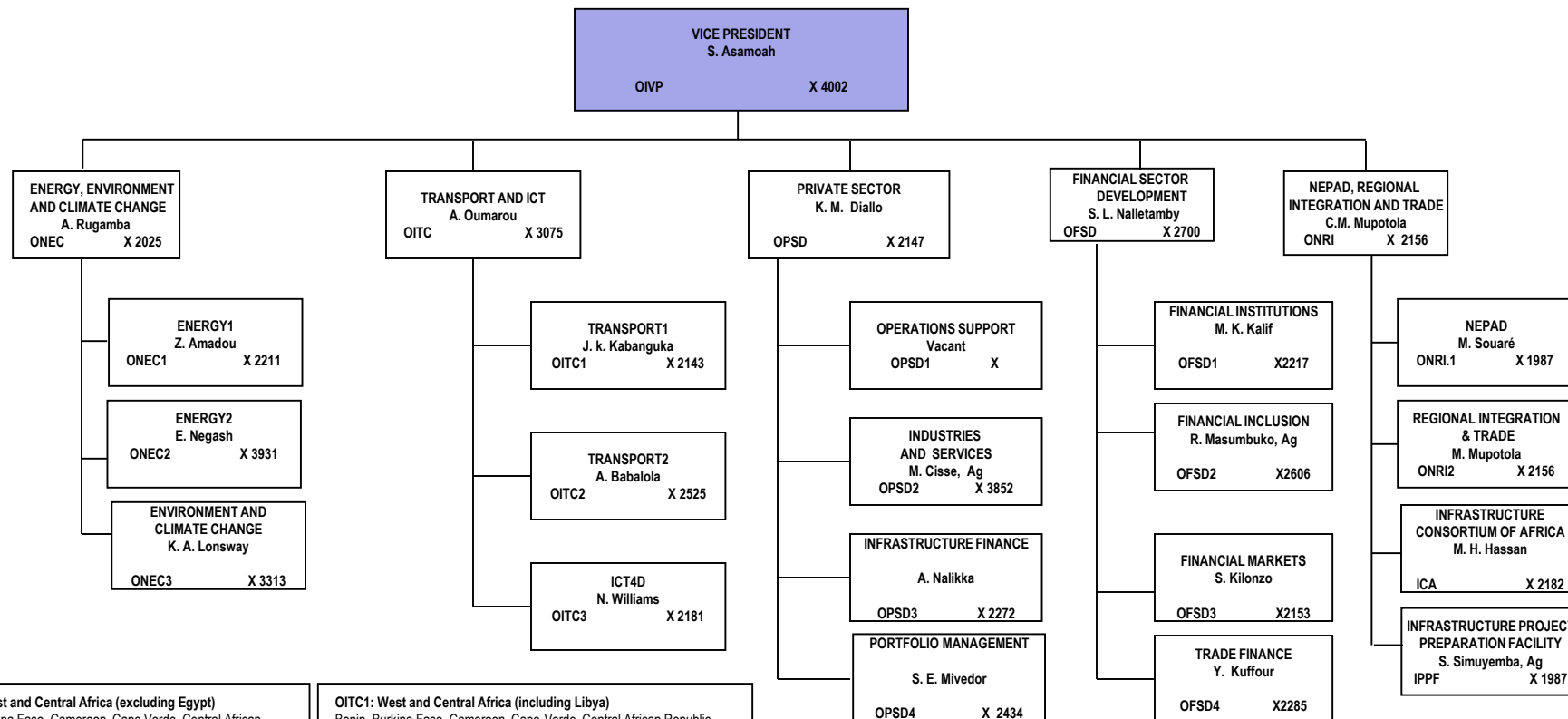
OSAN2: West and Central Regions

OWAS1: West and Central Africa
Benin, Burkina Faso, Cameroon, Cape Verde, Central African Republic, Chad, Congo (Democratic Republic), Congo (Republic), Cote d'Ivoire, Equatorial Guinea, Gabon, Gambia, Ghana, Guinea, Guinea-Bissau, Liberia, Mali, Niger, Nigeria, Sao-Tome & Principe, Senegal, Sierra Leone, Togo

OWAS2: East and Southern Africa (including Egypt)
Angola, Botswana, Burundi, Comoros, Djibouti, Egypt, Eritrea, Ethiopia, Kenya, Lesotho, Madagascar, Malawi, Mauritius, Mozambique, Namibia, Rwanda, Seychelles, Somalia, South Africa, Sudan and South Sudan, Swaziland, Tanzania, Uganda, Zambia, Zimbabwe



VICE PRESIDENCY OPERATIONS III: Infrastructure, Private Sector & Regional Integration



ONEC1: North, West and Central Africa (excluding Egypt)
Algeria, Benin, Burkina Faso, Cameroon, Cape Verde, Central African Republic, Chad, Congo (Democratic Republic), Congo (Republic), Cote d'Ivoire, Equatorial Guinea, Gabon, Gambia, Ghana, Guinea, Guinea-Bissau, Liberia, Libya, Mali, Mauritania, Morocco, Niger, Nigeria, Sao-Tome & Principe, Senegal, Sierra Leone, Togo, Tunisia

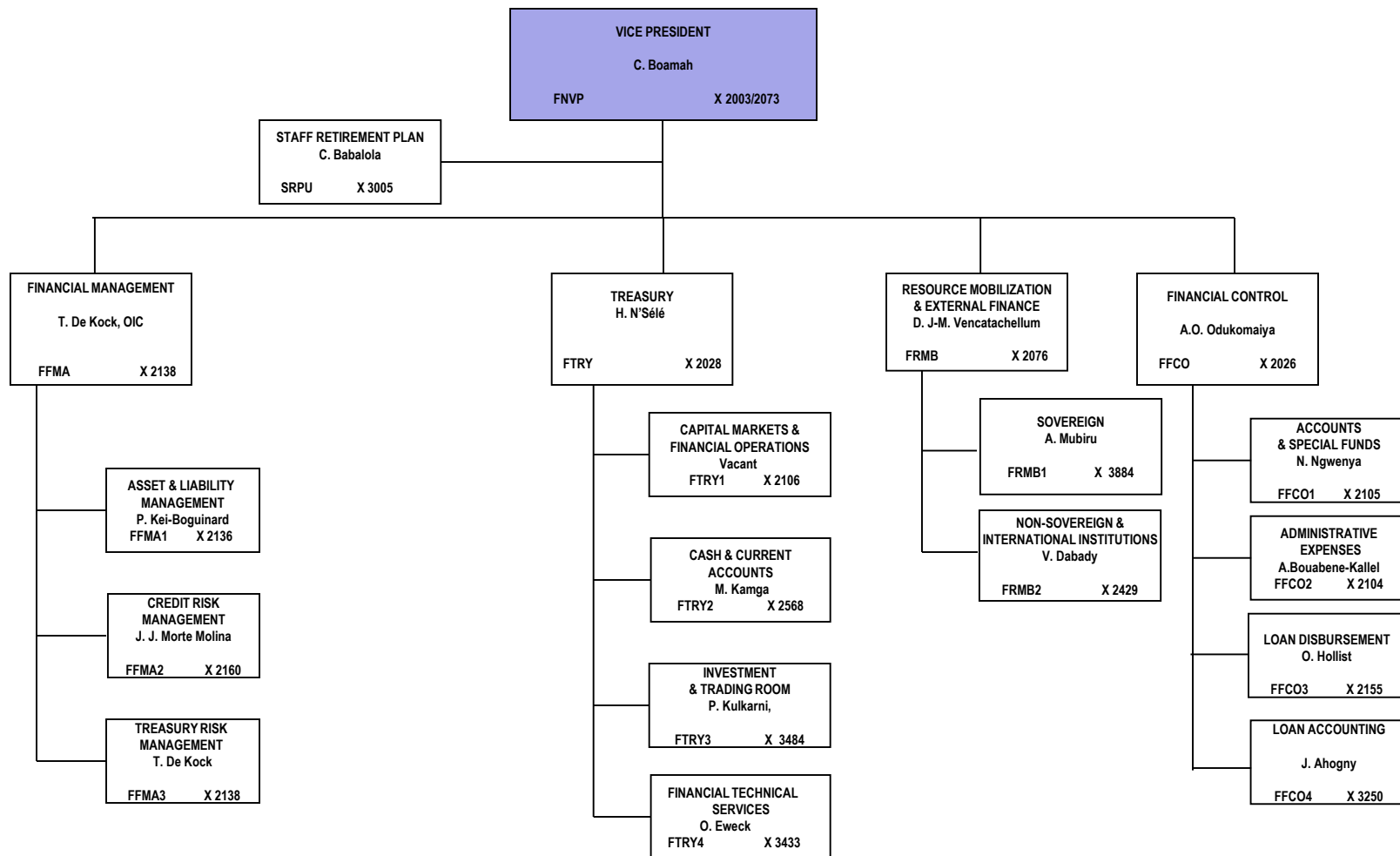
ONEC2: East and Southern Africa (including Egypt)
Angola, Botswana, Burundi, Comoros, Djibouti, Egypt, Eritrea, Ethiopia, Kenya, Lesotho, Madagascar, Malawi, Mauritius, Mozambique, Namibia, Rwanda, Seychelles, Somalia, South Africa, Sudan and South Sudan, Swaziland, Tanzania, Uganda, Zambia, Zimbabwe

OITC1: West and Central Africa (including Libya)
Benin, Burkina Faso, Cameroon, Cape-Verde, Central African Republic, Chad, Cote d'Ivoire, Congo, Chad, Democratic Republic of Congo, Equatorial Guinea, Gabon, Gambia, Ghana, Guinea, Guinea Bissau, Liberia, Libya, Mali, Niger, Nigeria, Sao Tome & Principe, Senegal, Sierra Leone, Togo

OITC2: North, East and Southern Africa
Algeria, Angola, Botswana, Burundi, Comoros, Djibouti, Egypt, Eritrea, Ethiopia, Kenya, Lesotho, Libya, Madagascar, Malawi, Mauritania, Mauritius, Morocco, Mozambique, Namibia, Rwanda, Seychelles, Somalia, South Africa, Sudan and South Sudan, Swaziland, Tanzania, Tunisia, Uganda, Zambia, Zimbabwe



**VICE PRESIDENCY
FINANCE**





VICE PRESIDENCY CORPORATE SERVICES

